

PM60MA3H/00-2H IP Matrix Switcher System

With 2ch HDMI output with 5ch 4K decoding, Powerful video wall management & Control IP camera like an analog System



Product Feature

- Support for network media, H265/264, RTSP data input
- Support computer keyboard & Mouse direct input, U Flash storage.
- Support 2ch HDMI output
- Support 2ch audio output.
- Each Video Output can identify optimum resolution automatically, or allow the user to change the output resolution manually.
- it can decode 5ch at 4K@30hz or 20ch at 1080p@30hz.
- Support video-splitting output, maximum 64 splitting per HDMI output.
- Support monitor splicing by any size ,splitting, windowing, zooming in & out
- Support Cruise, Plan, split, splicing, etc. display mode, Plan configuration and management
- Optimize video, it can make video stream smooth and improve network jammed .

In general

PM60MA3H/00-2H Network matrix switcher is latest decoding matrix and ip decoder, can decode stream of H265/264 & RTSP, it is also a Video Wall Controller system with 2ch HDMI output up to 5ch 4K or 20ch 1080p, perfect video wall management, including split, splicing, PIP, Plan, Cruise, etc. simple operation like analog system.

It can take stream from other platform on base of protocol or SDK.

R & D Ideas

Nowadays, IP products become more mainstream, partners are looking for a Decoder/ video wall controller/matrix combination allowing for an easy way to display and operate IP cameras and IP PTZs.

Simplicity of operation is the key and the ability to call a camera into a selected pane or window on video screen was the goal in developing this IP matrix switcher.

The command structure is simple: (1) (CAM) + (1) (MON) on the IP keyboard/PTZ controller allows the users to switch camera 1 to Monitor 1, while the joystick allows for precise operation of the PTZ.

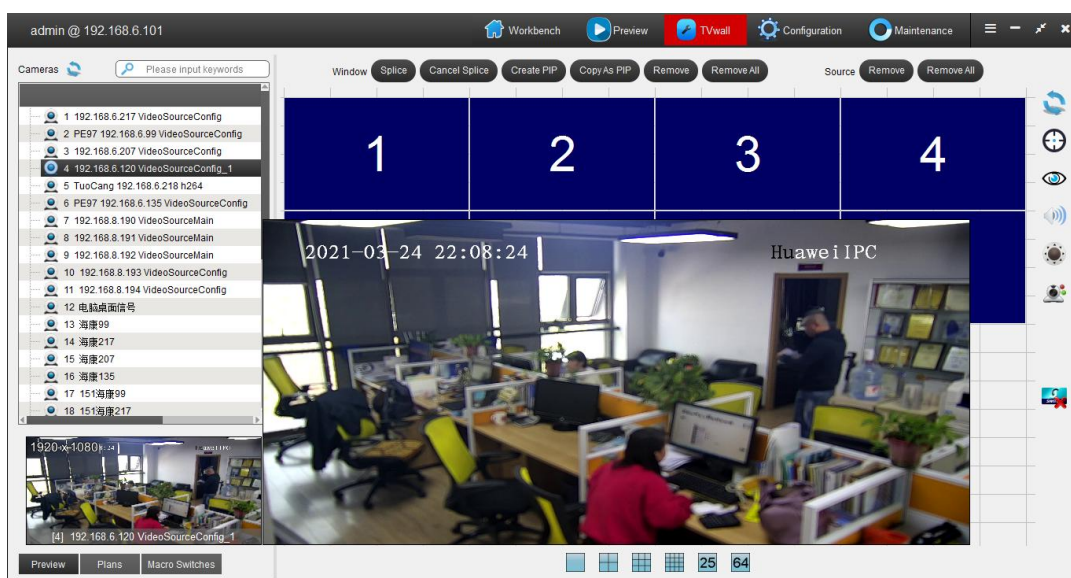
This was the idea behind the development of the PM60MA ip matrix: the IP PTZ is operated much like a typical Analog PTZ system with each PTZ being assigned an IP address on the network switch and the communication path/language is over ip protocol.

Rear panel

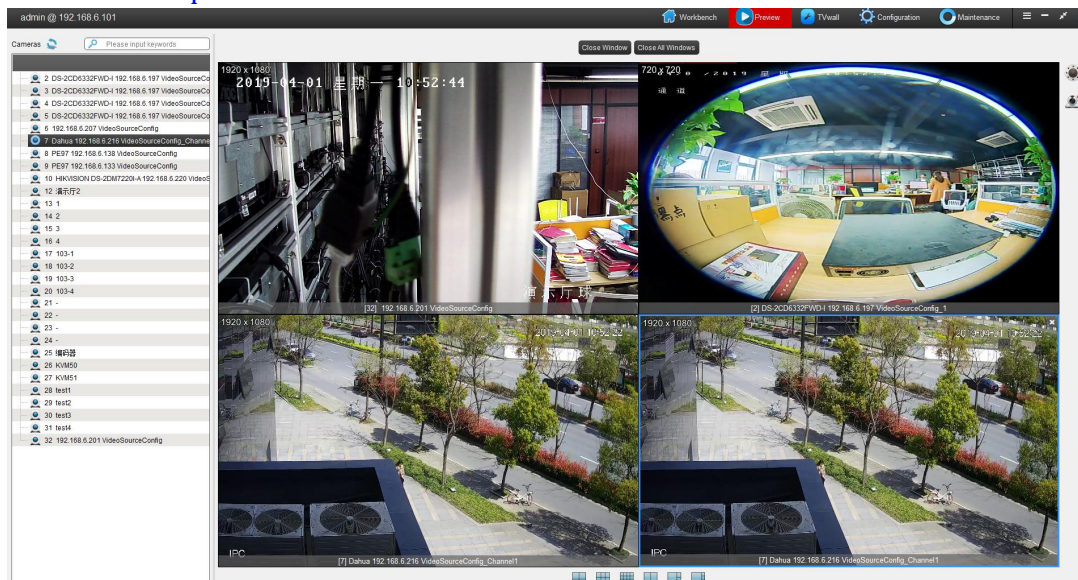


Net client All-in-one software

Allows the user to graphically configure the Video wall and discover the IP cameras present on the local area network.



PTZ Control & preview



Specifications

Model	PM60MA3H/00-2H
Physical	
output	2ch HDMI
input	No physical input
HDMI output resolution	1024×768P@60Hz,1280×720P@60Hz, 1366×768P@60Hz, 1920×1080P@30Hz, 3840×2160@30Hz
Video	
Video decoding	H.265,H.264
Video stream resolution	4K,1080P,1080I,720P,D1
Decoding capability	can decode 5ch 4K or 20ch 1080p or 40ch 720p or 80ch D1.
Splicing	2, it can splice the monitors connected on HDMI output. user-defined splicing.
Splitting	1/4/6/8/9/16/25/64, and user-defined splitting
Windowing and Cruise	support, it can set windowing on monitors to have maximum 128 layers' windowing.
OSD display	it can display OSD info. including window number, channel number, label, etc.
Audio	
encoding and decoding standard	support G.711, G.726, ADPCM
Audio enable/mute	it can turn on all audio and it can set one channel by quick operation.
input	support audio embedded in HDMI input or individual input.
Maintenance	
Basic applications	multiple user log in and log out, maximum 72 users on-line at same time. operation permission definition; Supports video switching and controlling.
	Support Segmentation display mode management.
	Automatic inspection, setting and call. Supports rollback playing.
System management and configuration	PETNET protocol available, once integration,the third party can manage this decoder, configuration upload and reload, operation permission setting and management
Maintenance	system log available.
	Fault detection and report.
	support online updating.
Port and connectors	
Ethernet	1ch, 1000Mbps adaptive RJ45 port
Audio input	No physical input of audio
Audio output	2ch,Φ3.5 socket
RS232	none

IP Matrix switcher system

Other functions	
Second development	support, SDK available
Time synchronization	internal RTC, it support automatic time sync. for multiple device. offers PENET protocol, it can synchronize time of time server.
Alarm input	support network alarm info. access.
Alarm process	support automatic or manual alarm process.
Monitor control	offers control port of monitor to control the monitors.
Stream self-adaptive	Support stream self-adaptive function, it can close this function, it can automatically choose main/sub stream to output to monitors.
Stream media forwarding	embedded Stream media forwarding, one camera takes steam one time.
smooth playing function	support smooth playing function, it can automatically adjust and optimize stream stuck or pause caused by network transmission.
Decoding delay	150ms maximum
Power supply	AC100V ~ 230V
Power consumption	9W
Working temperature	0 ~ 50°C
Working humidity	10% ~ 90%;
Dimension	215.2mm(W)×290.3mm(D)×43.6mm (H)
Weight	1.1KG

System Diagram



IP Matrix switcher system

Dimension

